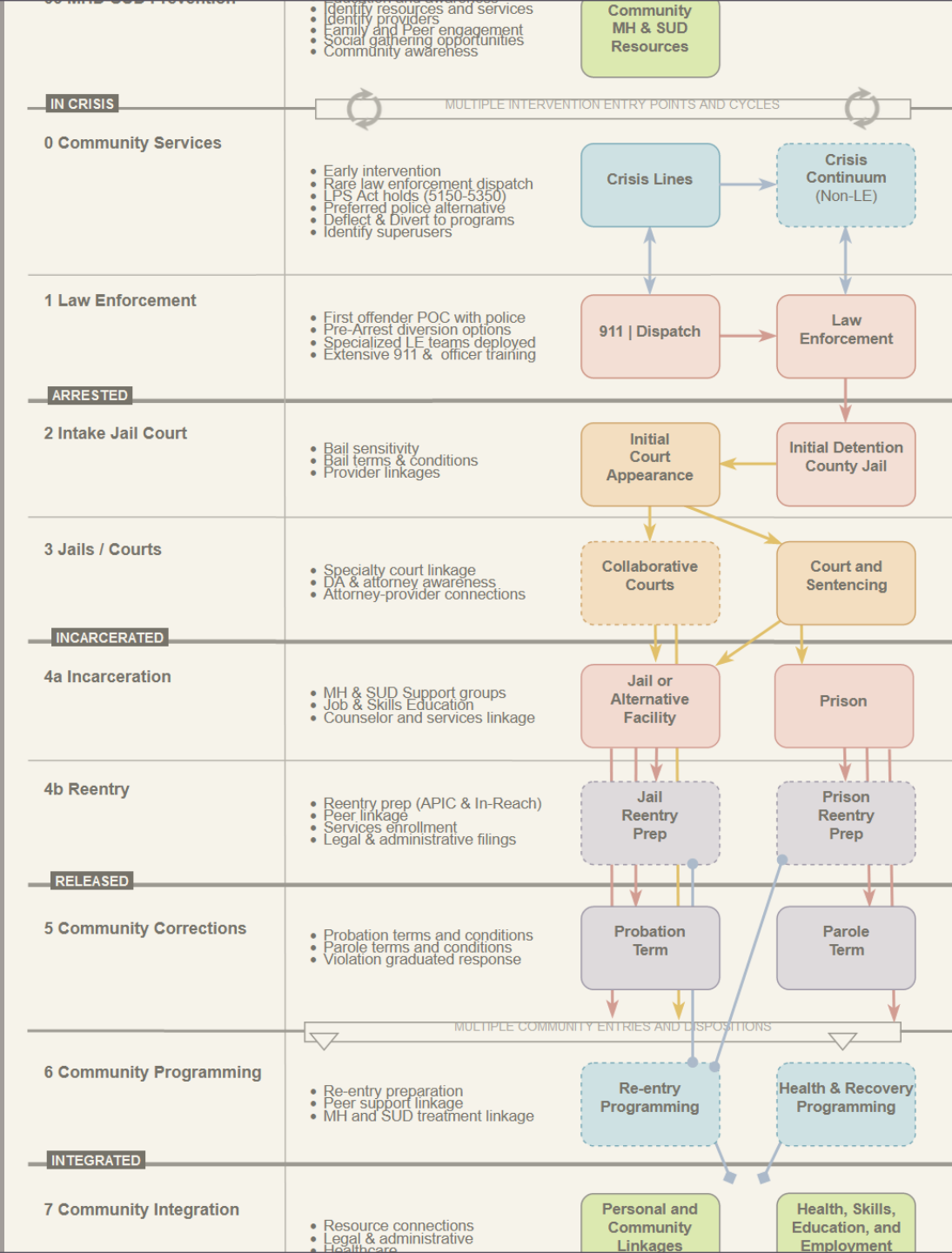


PEERS AT THE INTERSECTIONS AND INTERCEPTS OF OUR CRIMINAL-LEGAL AND BEHAVIORAL HEALTH SYSTEMS

Jerry Hall
Civic Mapping

June 2023

California Association of Mental Health Peer-Run Organizations:
CAMHPRO LEAD Peer Statewide Conference



Overview

Sequential Intercept Model (SIM)

Criminal Legal & Behavioral Health Systems

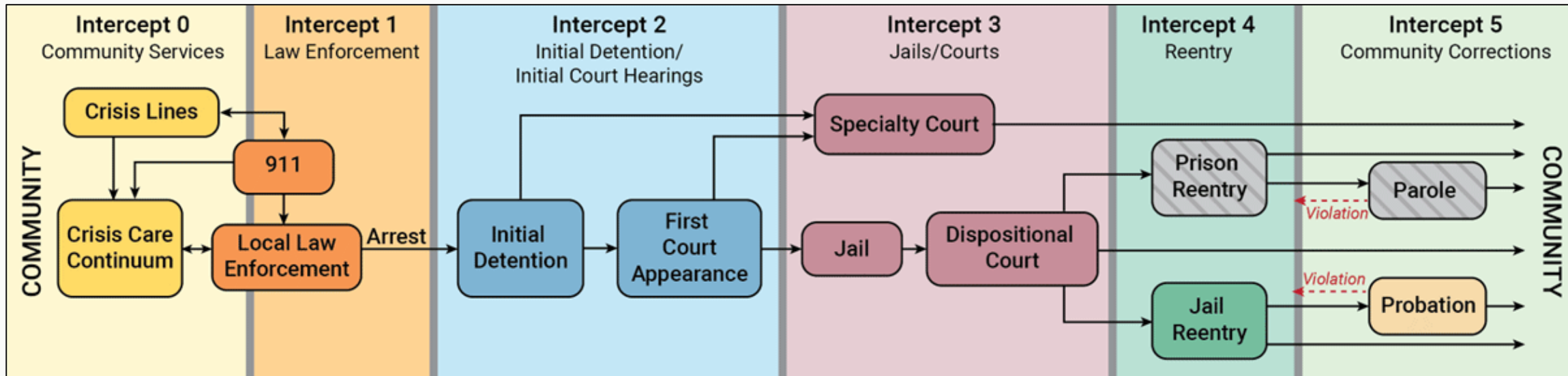
Governance Systems

Peer Opportunities: Employment & Advocacy

Resources & Next Steps



Sequential Intercept Model (SIM) Map



- Stages of Intervention or Intercept
- CL & BH Systems Overview
- Government & Community Stakeholders
- Communications & Process Pathways



San Francisco



San Diego



Riverside

Intercept 0 & 1

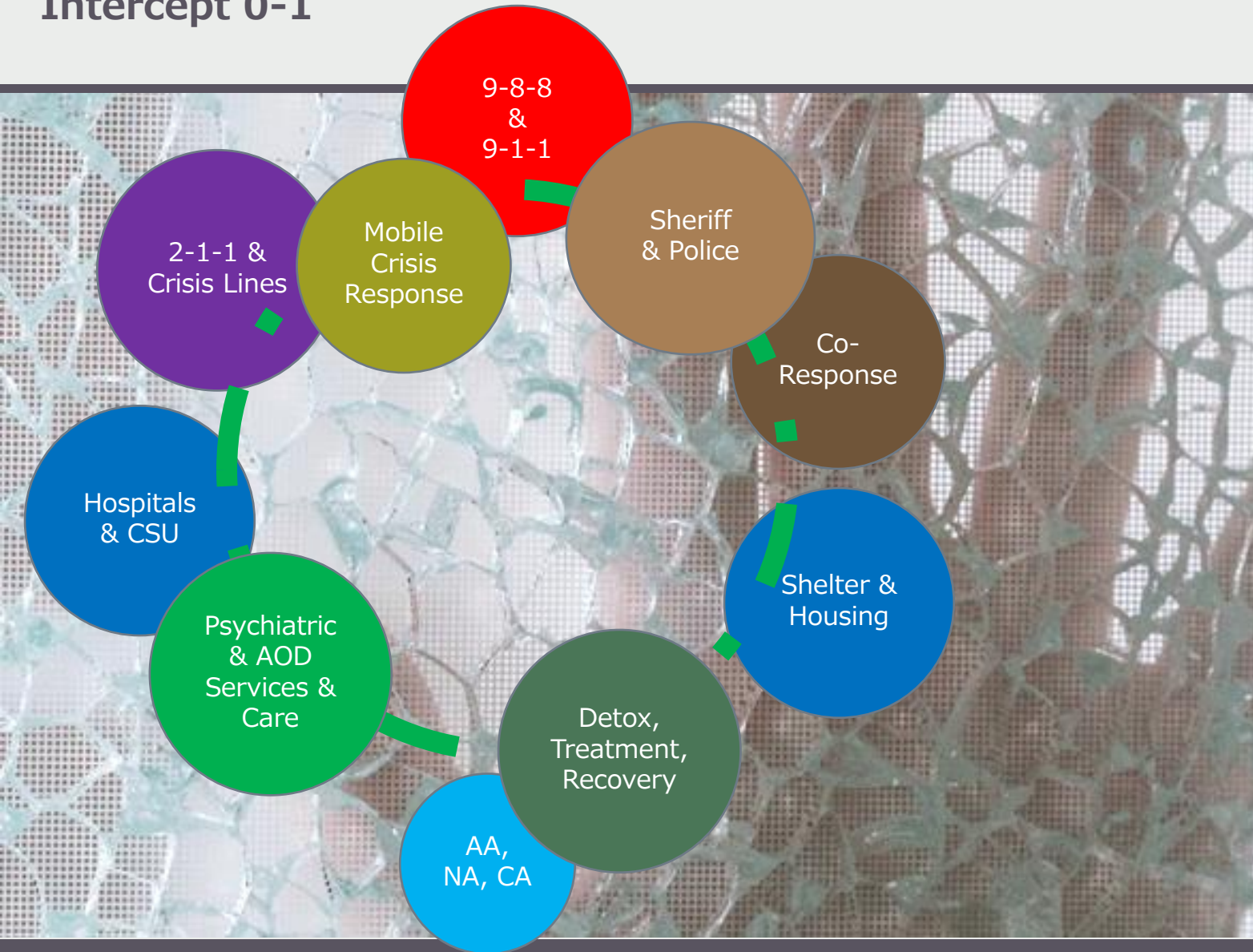
Hotlines & Warmlines

Crisis & Emergency Response

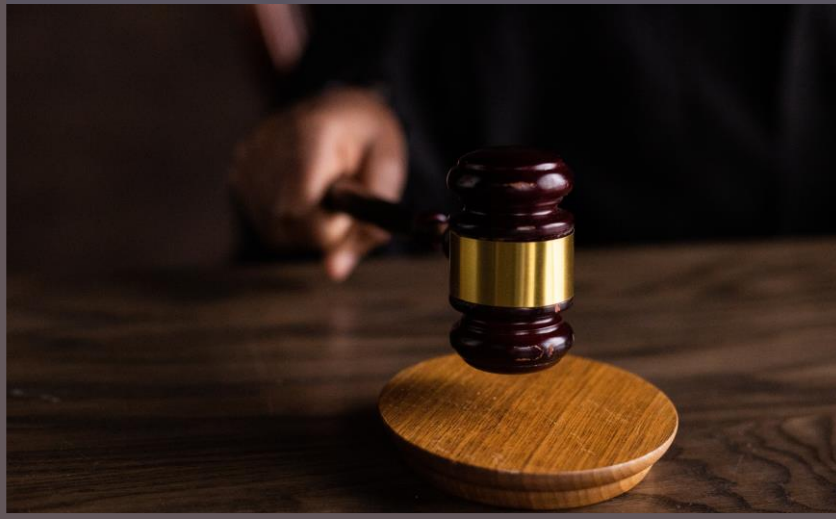
Medical & Provider Network

Community Services

Intercept 0-1



Crisis Response & Behavioral Health System



Intercept 2 & 3

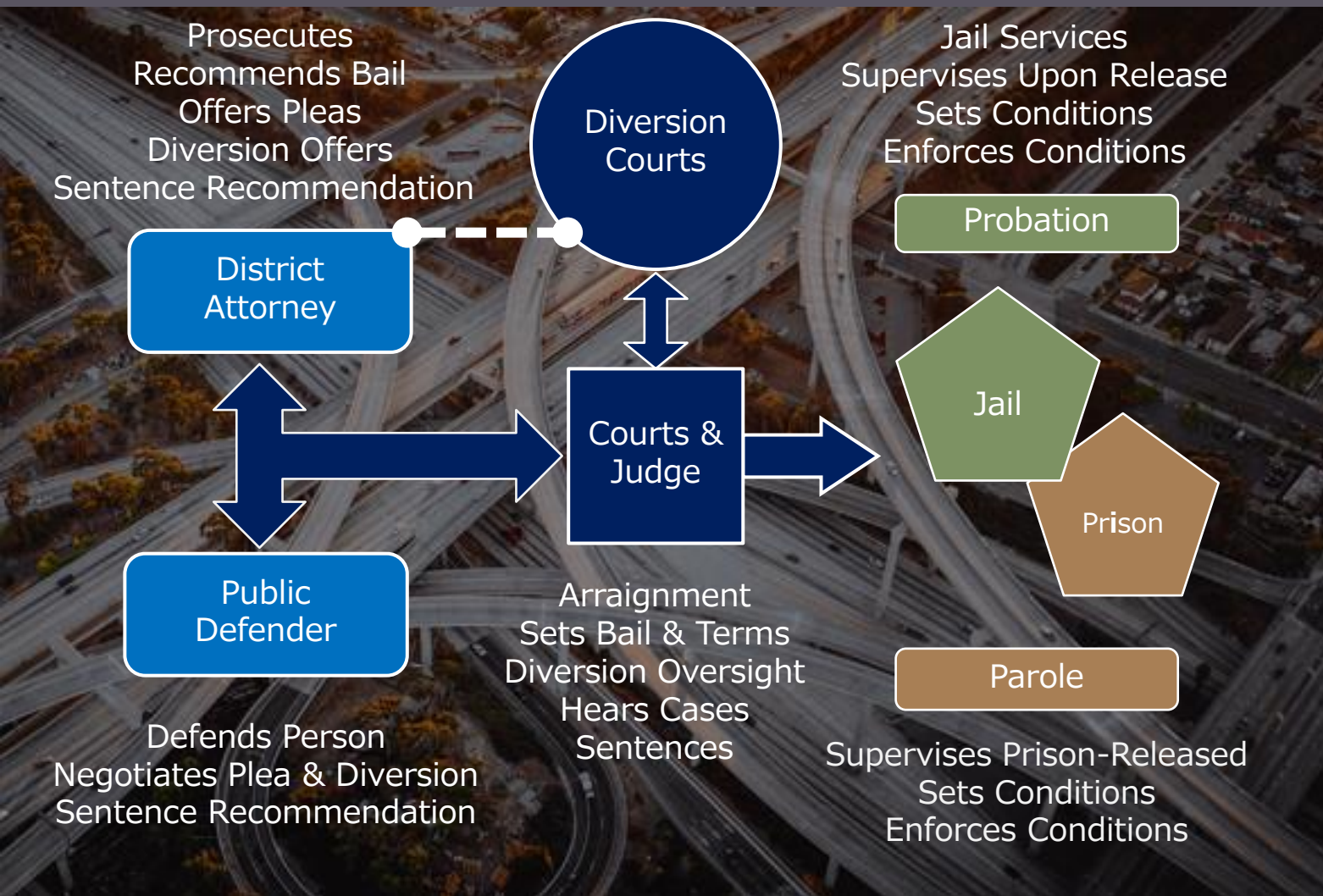
Booking & Assessments

Prosecution & Defense

Diversion & Regular Courts

Jail, Prisons, & Services

Intercept 2-3



Criminal-Legal Judicial, Diversion & Incarceration System

Collaborative Diversion Courts

Adult and Juvenile

Adult Courts

Mental Health

Drug

Veteran's

Reentry

Community/Homeless

Domestic Violence

DUI

Tribal Healing to Wellness

Family Dependency Drug

Federal District Drug

Juvenile Courts

Domestic Violence

Drug

Mental Health

Peer/Youth

Girls

CESE (Education)



Intercept 4 & 5

Reentry Preparation

Probation & Parole

Community Supports & Services

Medical, Medication, & Treatment

Community Integration

Intercept 4-5

any financial decisions in these tough economic times, learn the benefits, pitfalls, rules and restrictions.

WHAT IS A CONTRACT?

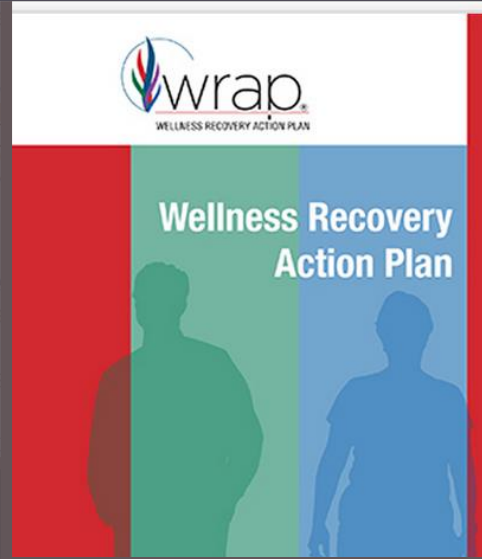
A contract is an agreement between two or more competent parties. Contracts may be oral or written and must be legal. A contract could, for example, involve a large purchase, such as a new car, for which you agree to make installment payments. Or you might sign a contract to lease an apartment for a year or to buy an insurance policy with annual premiums or to accept the terms of a new job.

WHO CAN MAKE A CONTRACT?

You can – if you're at least 18 years old and of sound mind. When considering any contract, however, take some precautions:

money. You simply insert personal identification and any surcharges or fees. opportunity to cancel the

A debit card is used to cardholder's account. You groceries at a supermarket consumers now use debit cash or checks. Be careful a card. The user generates account. So, a thief could bank account. If you lose without authorization, more than \$50 if you notify the



Reentry Prep, Probation, & Parole

Wellness Recovery Action Plan
(WRAP)

Connection to Services

Probation & Parole Supervision

Housing & Employment

Community Supports & Services

Community Integration

Life, Tech, & Web Orientation

Pre- & Post-Intercepts



Before the crisis

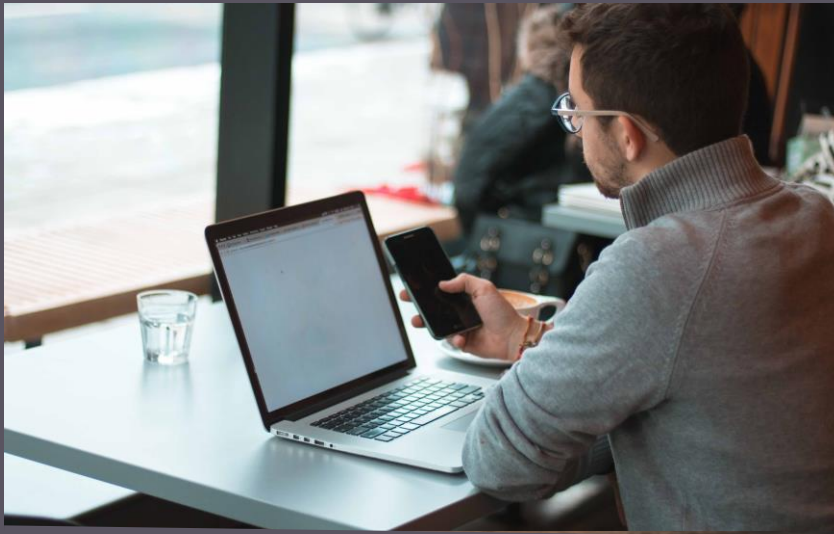
- Historical and cultural traumas
- Intergenerational trauma
- Social Determinants of Health (SDoH)
- Adverse Childhood Experiences (ACEs)
- Juvenile legal system involvement



Off paper and beyond

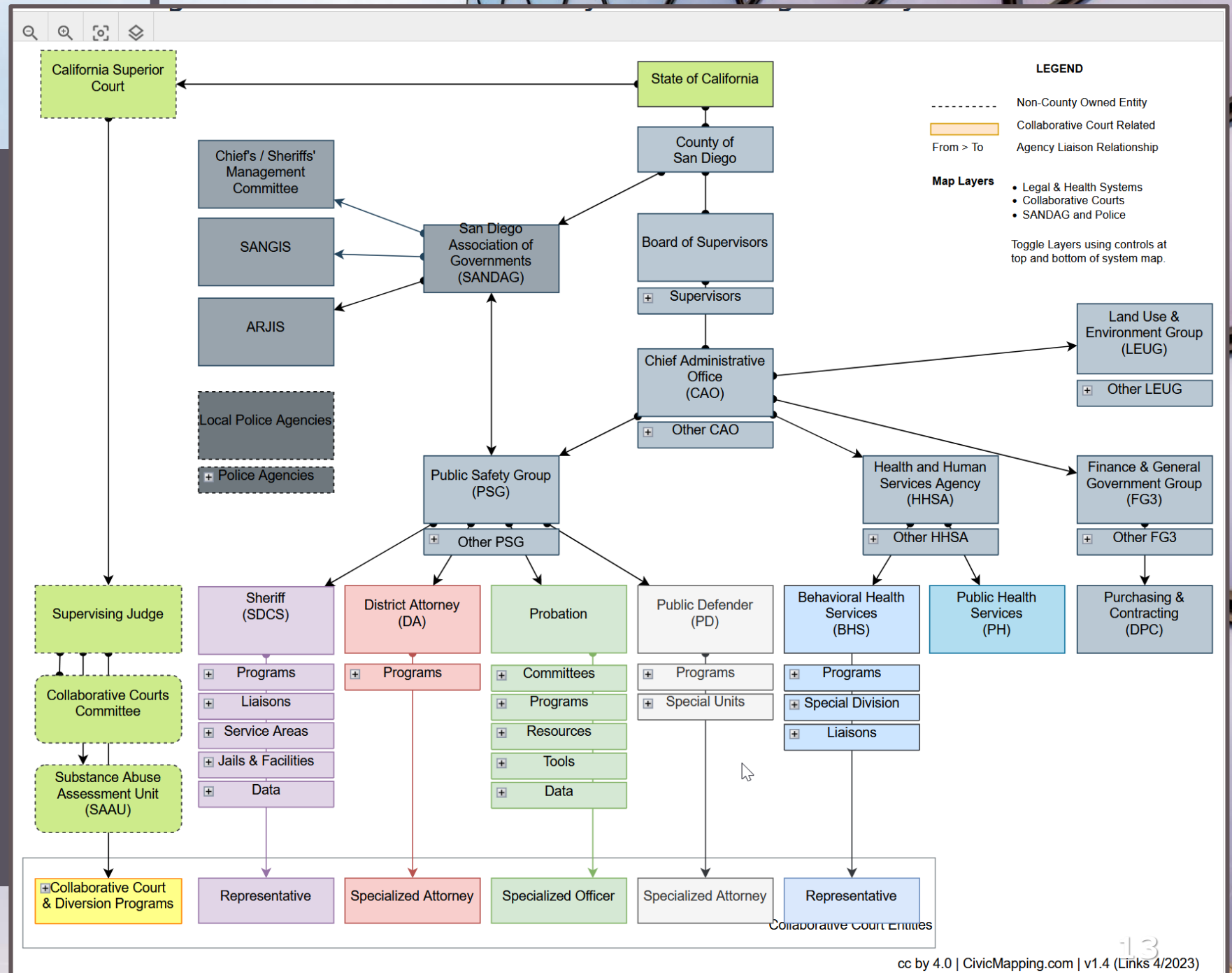
- Family & Friends Network
- Community Engagement
- Housing & Employment
- Education, Training, & Skills
- Faith-based involvement

Technology



Ecosystem Mapping

San Diego County



Peer Engagement Opportunities

County CL & BH Ecosystem

Community Corrections Partnership (CCP)

9-1-1

Sheriff's and Local Police Departments

EMS

9-8-8

County Association of Government (AOG)

Legal Aid

Behavioral Health Advisory Board

Boards & Commissions

Reentry Roundtable

Community Advocacy Organizations

DA

Public Defender

Probation

Liaisons

Courts

MHSA 3-Year Plan

County Budget

Procurement Portal

Crisis Hotline & Response Systems

Clubhouses

Provider Network

Hospitals

Community Supports Services

Social Groups

2-1-1

Reentry Services

Volunteer Match

Key Organizations and Resources



Training, Education, & Advocacy



Informed peers are effective peers.

OPENJUSTICE

Tools for Peers

Tools

- [Peer Support Toolkit \(DBHIDS\)](#)
- [Mental Health Crisis Plan](#) Mobile App
- [Digital Peer Support | App Database](#)
- [We Are More](#) | Peer Support Groups App

10 Best Mental Health Apps

Talk Therapy: [BetterHelp](#) Depression: [Talkspace](#)
Mindfulness: [Headspace](#) Stress Relief: [Sanvello](#)
Addiction: [I Am Sober](#) CBT: [MoodKit](#)
Better Sleep: [Calm](#) Positive Thinking: [Happify](#)
Kids: [Breathe, Think, Do with Sesame](#)
Anxiety: [Worry Watch](#) by [verywell.mind](#)

Reentry Plans

- [Collaborative Comprehensive Case Plan \(CCCP\)](#)
- [Wellness Recovery Action Plan \(WRAP\)](#)

Know-How Guides

- [When You Turn 18 | Legal Survival Guide](#)
- [What is Digital Privacy](#)
- [Surveillance Technologies](#)

For First Responders

- [Peer Connect](#) peer support platform

California SIM & Peer Resources

Sequential Intercept Model (SIM)

- [The Sequential Intercept Model \(SIM\)](#)
- [Peers Across the SIM](#) and [Map \(PRA\)](#)

Current Practices

- [Prevalence of Local Criminal Justice Practices](#)

Diversion Models & System Strategies

- [Reducing Harm Through Collaborative Solutions – Promising and Proven City Models \(NLC\)](#)
- [Care First, Jails Last – Health and Racial Justice Strategies for Safer Communities \(LA-ATI\)](#)
- [Responding to Individuals in Behavioral Health Crisis via Co-Responder Models \(PRA\)](#)
- [Advancing An Alternative to Police: Community-Based Services for Black People with Mental Illness](#)
- [Behavioral Health Diversion Interventions \(CSG\)](#)
- [Five Steps to Effective Integration of Peer Recovery Support Services in the Criminal Justice System](#)
- [Advancing the Work of Peer Support Specialists in Behavioral Health-Criminal Justice Programming \(CSG\)](#)

Data

- [Data Collection Across the Sequential Intercept Model \(SIM\): Essential Measures](#)



[Community Corrections Partnership Plans](#)



[MHSA Annual Plans – Behavioral Health Systems](#)

[Community Engagement & Advocacy](#)

California SIM & Peer Resources

Mental Health

- [The Criminal/Legal Experiences of Individuals with Mental Illness along the Sequential Intercept Model: An Eight-Site Study](#)

Trauma

- [What is Genetic Trauma?](#)
- [How Awareness of Epigenetics and Generational Trauma Can Inform Therapy](#)
- [Adverse Childhood Experiences \(ACES\)](#)
- [Trauma-Informed Approaches Across the Sequential Intercept Model \(CSG\)](#)

Courts

- [Peers in the Courts \(NCSC\)](#)
- [Leading Change: The Court's Collective Response to Individuals who Frequently Cycle Through Systems \(NCSC\)](#)

Jails

- [City & County Leadership to Reduce the Use of Jails: Engaging Peers in Jail Use Reduction Strategies \(NLC\)](#)
- [Peer Recovery Support Services in Correctional Settings \(BJA\)](#)

Peer Networks

- [Promise Resource Network \(PRN\)](#)

California SIM & Peer Resources

Workforce

- [Filling the Gaps in the Behavioral Health Workforce](#) (BPC)

Juvenile

- [Detour to Opportunity: A guide on young adult diversion from the criminal justice system](#) (USDOL)
- [California Juvenile Justice Process Map](#)

Legislative

- [Model Expanding Access to Peer Recovery Support Services Act](#) (LAPPA)

Research

- [California Peer Providers in Transitions of Care](#) (UC)

CA Health Systems and Advisory Boards

County, MHSAs Advisory Board, and Behavioral Health System

Alameda MHB BHS	Madera BHB BHS	San Luis Obispo BHB BHS
Alpine MHB BHS	Marin MHB BHS	San Mateo MHSARC BHS
Amador BHAB BHS	Mariposa BHB BHS	Santa Barbara BWC BHS
City of Berkeley MHC BHS	Mendocino BHB BHS	Santa Clara BHB BHS
Butte BHB BHS	Merced OPC BHS	Santa Cruz MHAB BHS
Calaveras MHAB BHS	Modoc UNK BHS	Shasta MHADAB BHS
Colusa BHB BHS	Mono BHAB BHS	Sierra BHAB BHS
Contra Costa MHC BHS	Monterey BHC BHS	Siskiyou BHB BHS
Del Norte BHB BHS	Napa MHSUAB BHS	Solano MHAB BHS
El Dorado MHB BHS	Nevada MHSUAB BHS	Sonoma MHB BHS
Fresno BHB BHS	Orange MHB BHS	Stanislaus BHB BHS
Glenn MHB BHS	Placer MHADAB BHS	Sutter-Yuba BHAB BHS
Humboldt MHB BHS	Plumas BHC BHS	Tehama BHAB BHS
Imperial MHB BHS	Riverside BHC BHS	Tri-City MHC BHS
Inyo BHAB BHS	Sacramento MHB BHS	Trinity BHS
Kern BHB BHS	San Benito BHAB BHS	Tulare MHB BHS
Kings BHAB BHS	San Bernardino BHC BHS	Tuolumne BHAB BHS
Lake MHC DMH	San Diego BHAB BHS	Ventura BHAB BHS
Lassen BHAB BHS	San Francisco MHB BHS	Yolo LMHB BHS
Los Angeles MHC BHS	San Joaquin BHB BHS	

Acronyms

BHAB	Behavioral Health Advisory Board
BHAC	Behavioral Health Advisory Committee
BHB	Behavioral Health Board
BHS	Behavioral Health Services
BWC	Behavioral Wellness Commission
DMH	Department of Mental Health
LMHB	Local Mental Health Board
MHSARC	Mental Health & Substance Abuse Recovery Commission
MHAB	Mental Health Advisory Board
MHSUAB	Mental Health and Substance Use Advisory Board
MHB	Mental Health Board
MHC	Mental Health Commission
MHADAB	Mental Health, Alcohol and Drug Advisory Board
OPC	Ongoing Planning Council

by BHABrehab.com

DISCUSSION



Does helping understand the greater criminal-legal and behavioral-health ecosystem give you ideas of where peers could plug in?

What types of Diversion courts are used in your county?

Do you know how to contribute to your local planning processes?

Do you have relationships with any of the government or provider planning stakeholders that you can champion peer supports with?

Attributions

Thanks for use of your creative works!

Sequential Intercept Model

[Policy Research Associates, Inc.](#)

Images by

[Ruan Richard Rodrigues](#)

[Denys Nevozhai](#)

[Khamkéo Vilasing](#)

[OPPO Find X5 Pro](#)

[Kaysha](#)

[Kenny Eliason](#)

[Nick Sarvari](#)

[Christina @ wocintechchat](#)

[Mailchimp on Unsplash](#)

[Erica Wittlieb](#)

[Ekaterina Bolovtsova](#)

[LinkedIn Sales Navigator](#)

[Jovydas Pinkevicius](#)

[Sarah Sch](#)

[Joel Muniz](#)

[Firmbee.com](#)

[Benjamin Sow](#)

[Georgio Trovato](#)

[Joseph Frank](#)

[Алексей Сабулевский](#)

THANK YOU



Jerry Hall

Jerry@CivicMapping.com

CivicMapping.com